

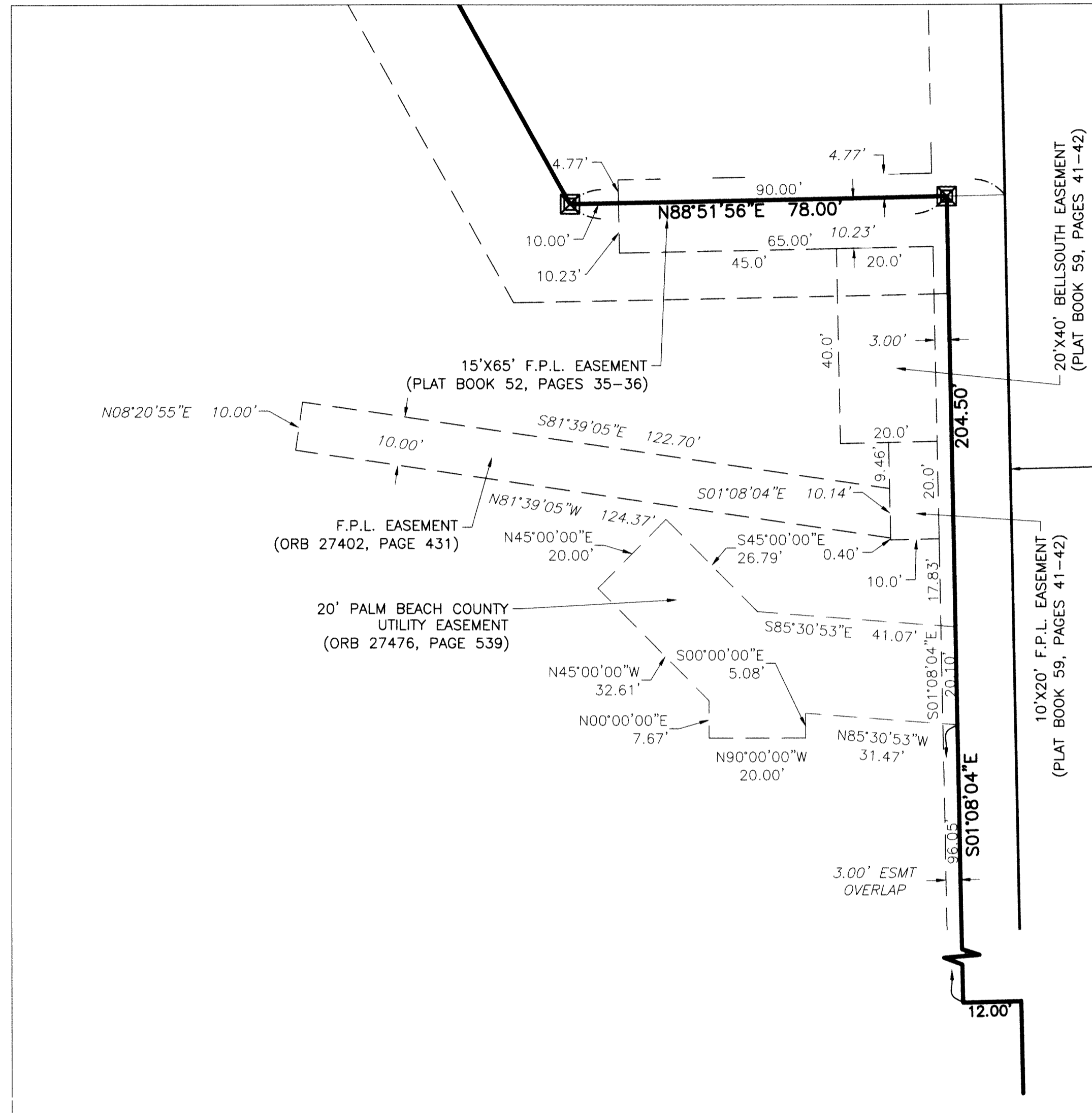
POLO CLUB SHOPS REPLAT 2 MUPD

BEING A REPLAT OF THE POLO CLUB SHOPS REPLAT
 AS RECORDED IN PLAT BOOK 113, PAGES 151 AND 152 AND A PORTION OF OLD CLINT MOORE ROAD AS RECORDED IN DEED BOOK 784,
 PAGE 153, BOTH OF THE PUBLIC RECORDS OF PALM BEACH COUNTY, FLORIDA,
 LYING IN SECTION 35, TOWNSHIP 46 SOUTH, RANGE 42 EAST, PALM BEACH COUNTY, FLORIDA.

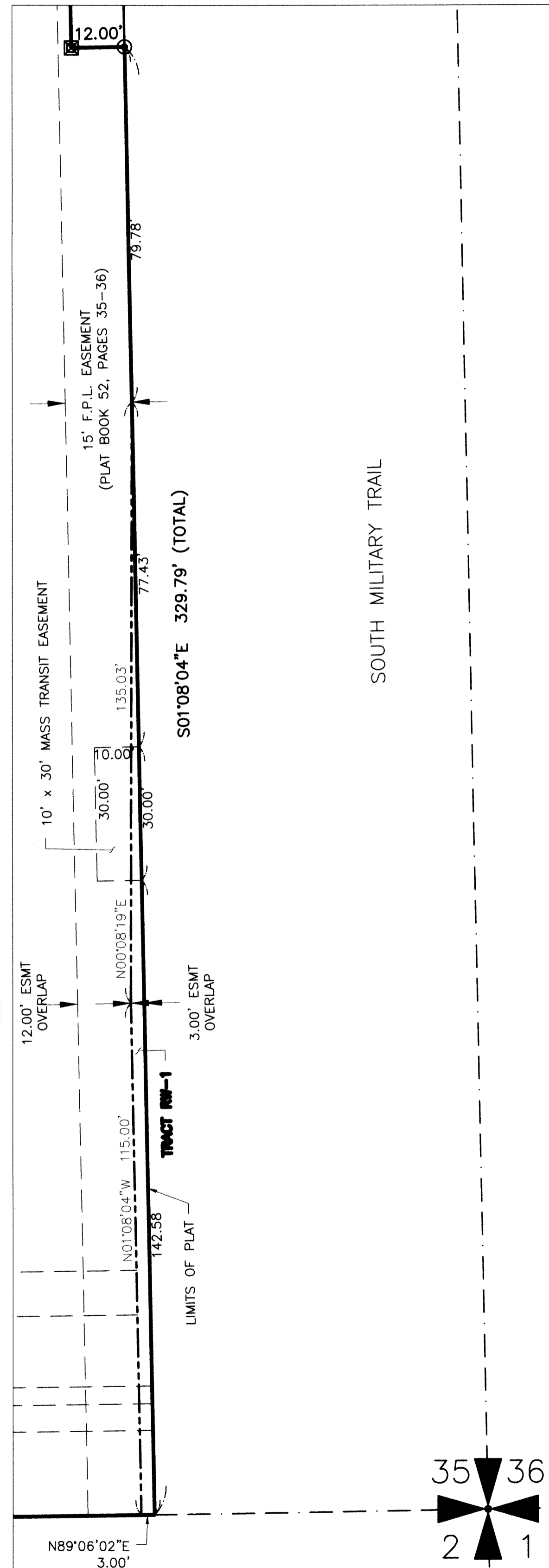
NOTE:
 COORDINATES SHOWN ARE GRID COORDINATES
 DATUM - NAD 83 (1990 ADJUSTMENT)
 STATE PLANE FLORIDA EAST ZONE
 TRANSVERSE MERCATOR PROJECTION
 LINEAR UNIT = U.S. SURVEY FEET
 ALL DISTANCES ARE GROUND (UNLESS OTHERWISE NOTED)
 SCALE FACTOR = 1.0000356
 PLAT BEARING = GRID BEARING
 GROUND DISTANCE X SCALE FACTOR = GRID DISTANCE

153

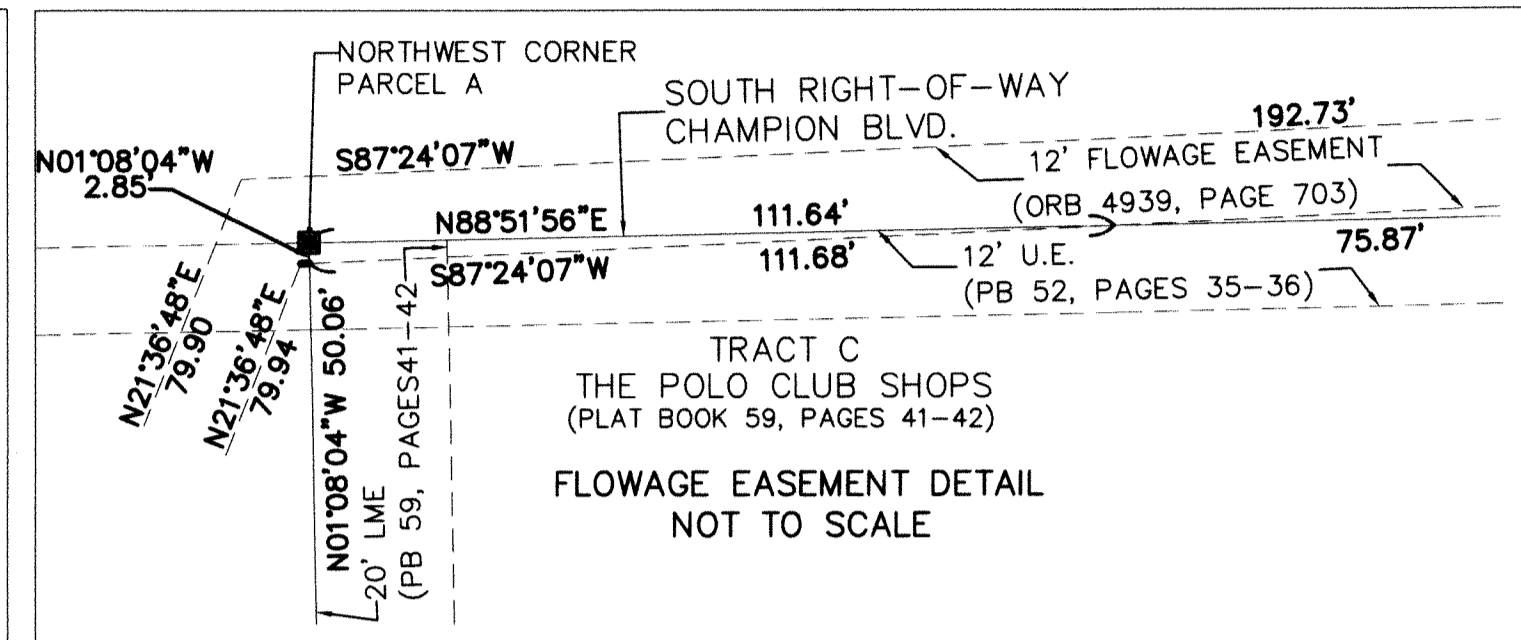
DETAIL A FROM SHEET 2



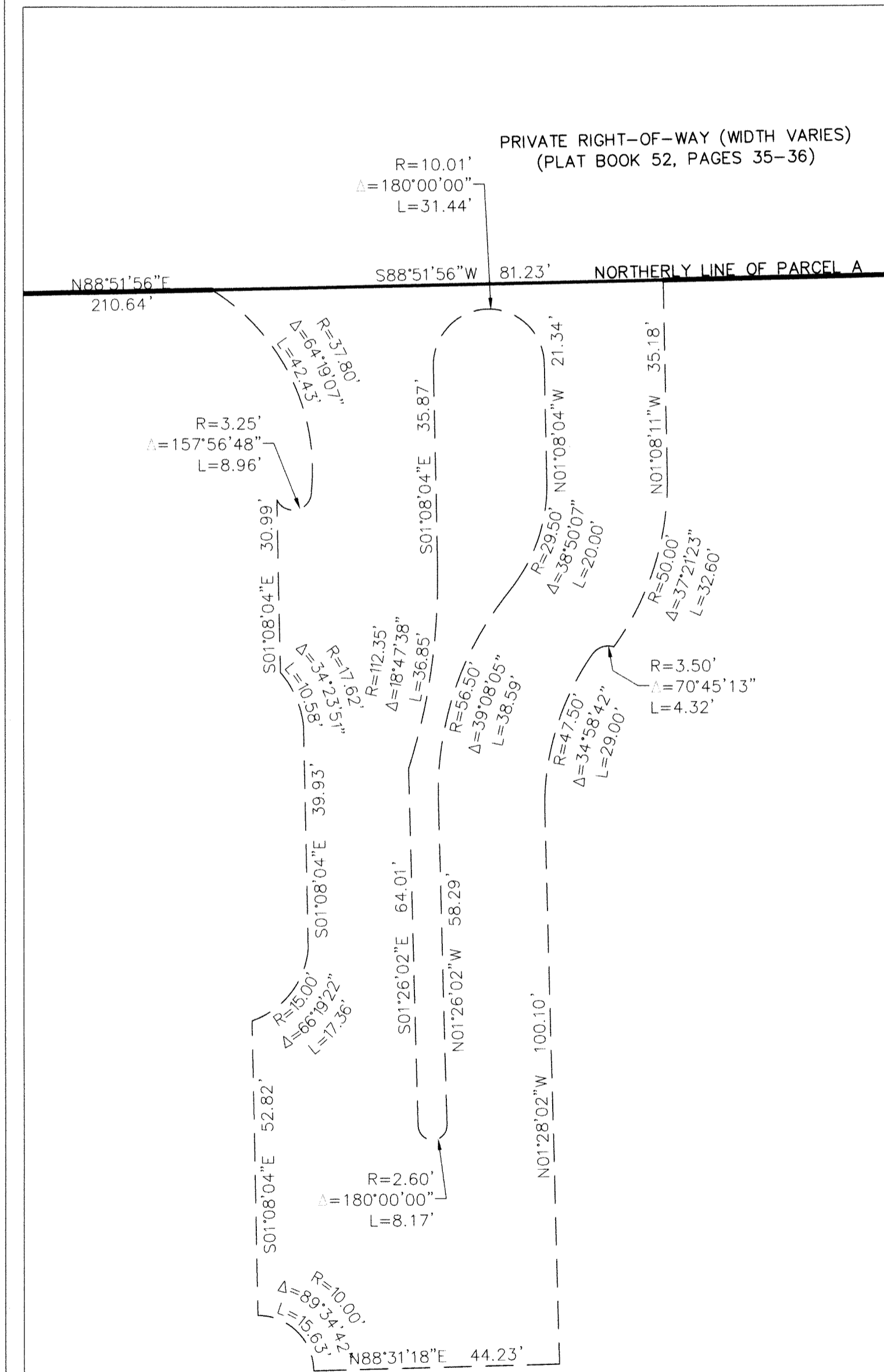
DETAIL B FROM SHEET 2



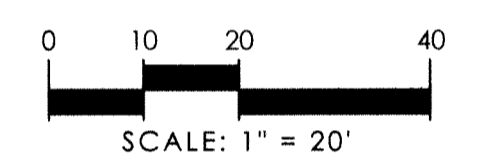
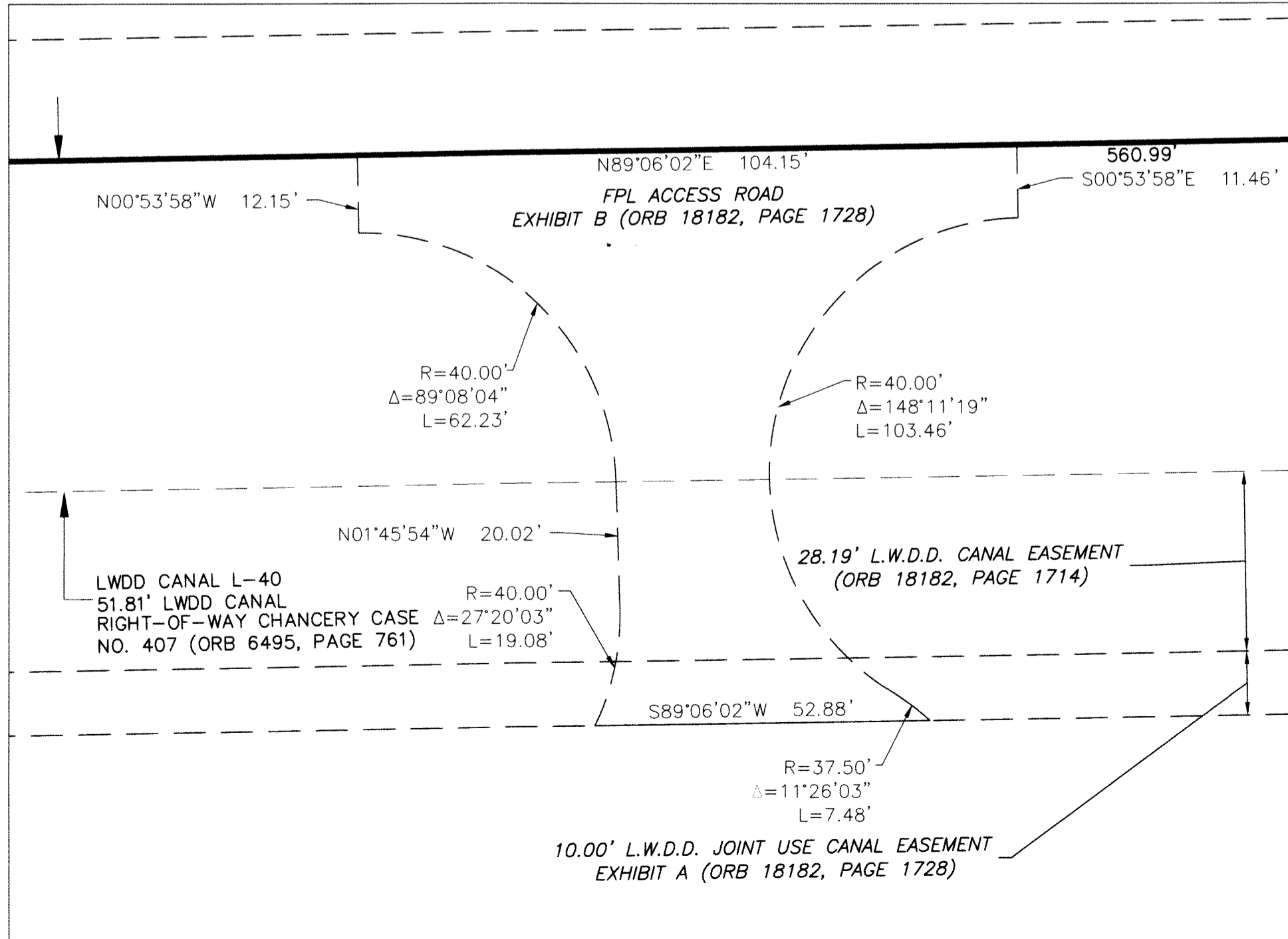
DETAIL C FROM SHEET 2



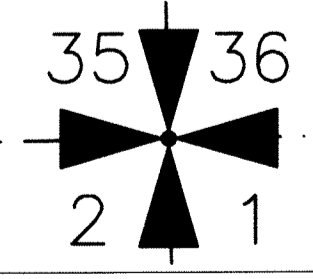
DETAIL E FROM SHEET 2



DETAIL D FROM SHEET 2



- LEGEND**
- C = Center Line
 - CONC. = Concrete
 - DE = Drainage Easement
 - E = Easing
 - F.P.L. = Florida Power & Light
 - I.D. = Identification
 - LWDD = Lake Worth Drainage District
 - L = Length of Arc
 - LB = Licensed Business
 - LME = Lake Maintenance Easement
 - MUPD = Multi Use Planned Development
 - N = Northing
 - NAD = North American Datum
 - N/D = Nail & Disk
 - NO. = Number
 - ORB = Official Records Book
 - PBC = Palm Beach County
 - PBCR = Palm Beach County Records
 - PBCWUD = Palm Beach County Water Utility Department
 - PG. = Page
 - PB = Plat Book
 - P.O.B. = Point of Beginning
 - P.O.C. = Point of Commencement
 - PRC = Point of Reverse Curvature
 - PRM = Permanent Reference Monument
 - PUD = Planned Unit Development
 - R/W = Right-of-Way
 - RPB = Road Plat Book
 - (TYP.) = Typical
 - UE = Utility Easement
 - = Set 4"x4" Concrete (PRM) w/Aluminum Disc Stamped "LB 7055 PRM" Unless Otherwise Noted
 - ⊙ = Set Nail & Brass Disc Stamped "LB 7055 PRM" Unless Otherwise Noted



SHEET 3 OF 3 SHEETS

WGI
 2035 Vista Parkway, West Palm Beach, FL 33411
 Phone No. 866.909.2220 www.wginc.com
 Cert No. 6091 - LB No. 7055
 THIS INSTRUMENT WAS PREPARED BY ERIC MATTHEWS, P.S.M.
 PROFESSIONAL SURVEYOR AND MAPPER, LICENSE NO. 6717
 FOR THE FIRM: WANTMAN GROUP, INC.